

10 Carlson Court
Suite 500
Etobicoke, Ontario
M9W 6L2

tel: 416-674-7707

Version: 6.0

Date: July 2001

**Steeles Technology Campus
Low Rise Building
BOMA Assignments
Floor 2**

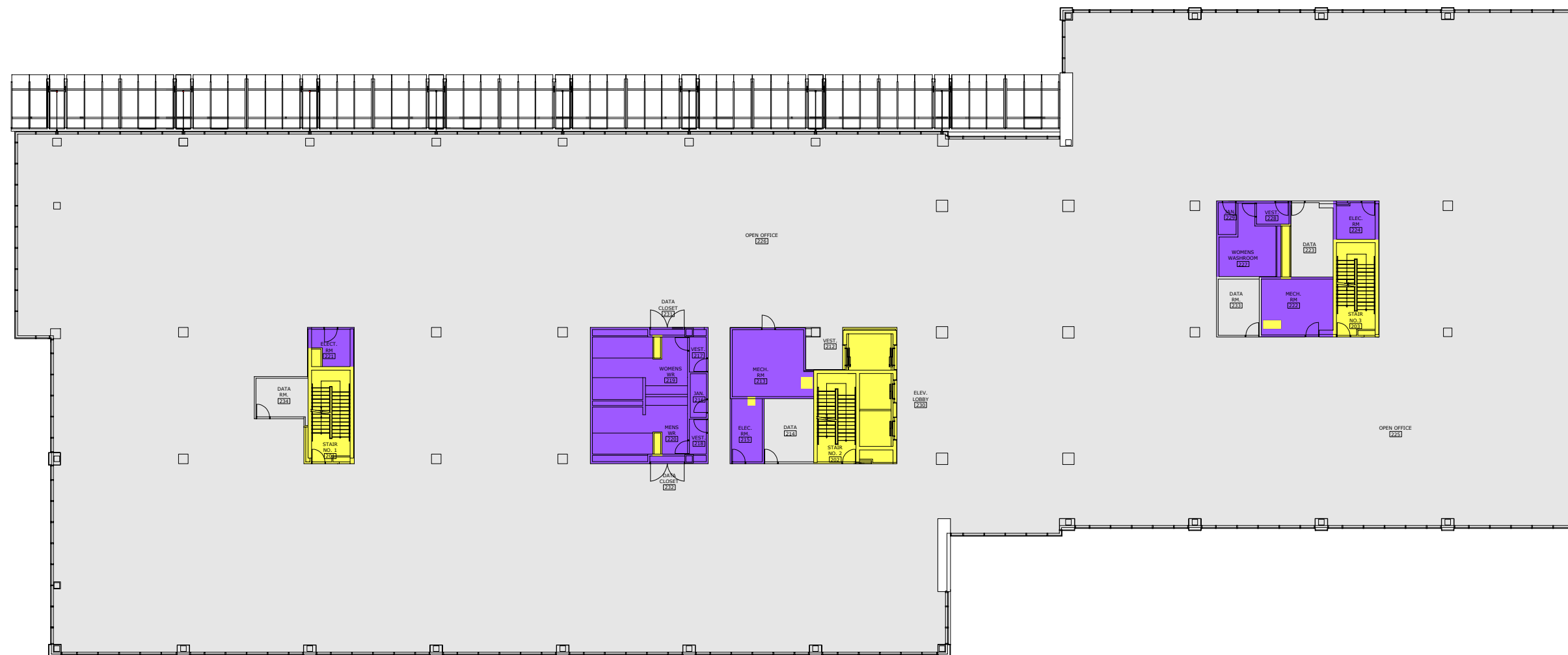
BOMA 1996 Areas

Office Usable Area:	39,804 sq ft
Floor Common Area:	1,951 sq ft
Building Common Area:	0 sq ft
Vertical Penetrations:	1,139 sq ft
Basic Rentable Area:	41,755 sq ft
Rentable Area:	44,033 sq ft

prepared by:



tel: 416-323-2858
fax: 416-323-0855
mail@xmeasures.com
www.xmeasures.com



- Office Usable
- Retail Usable
- Floor Common Area
- Building Common Area
- Vertical Penetrations